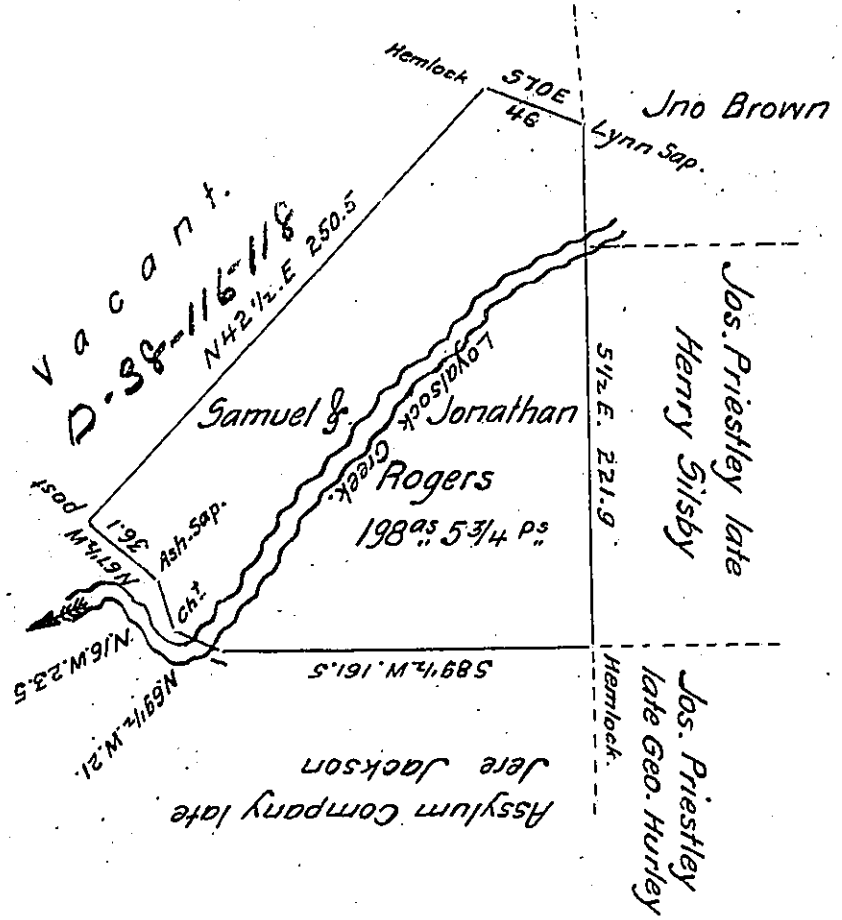


FORM NO. 1.



Surveyed 16<sup>th</sup> May 1820 to Samuel & Jonathan Rogers on their warrant dated 18<sup>th</sup> January 1820 the above described tract of land containing one hundred ninety eight acres five  $\frac{3}{4}$  perches and the allowance, &c. Situate in Elkland and Shrewsbury Townships Lycoming County.

Jacob Antes D.S.

To Jacob Spangler Esq: }  
 Sur. Gen: }

IN TESTIMONY that the above is a copy of the original remaining on file in the Department of Internal Affairs of Pennsylvania, made conformably to an Act of Assembly approved the 16th day of February 1833, I have hereunto set my hand and caused the Seal of said Department to be affixed at Harrisburg, this sixteenth day of January 1908

*Newry Howell*  
 Secretary of Internal Affairs.